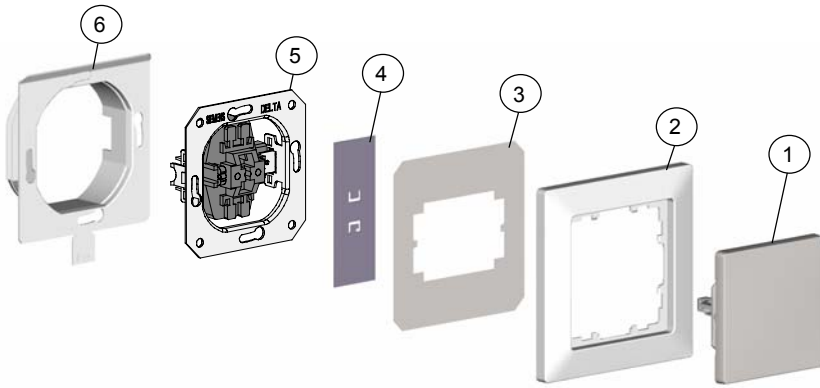
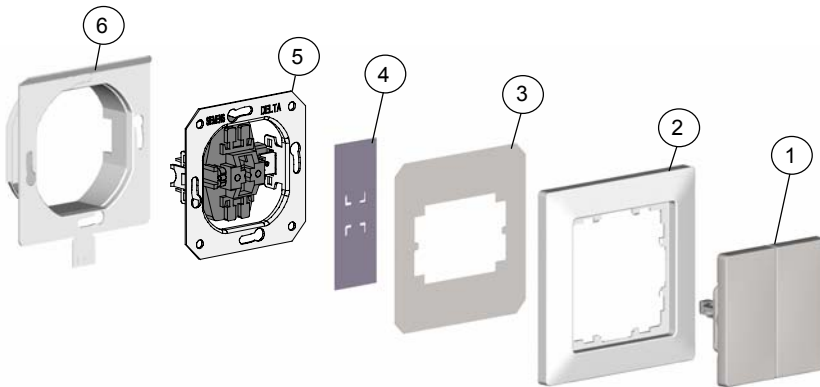


Mounting guidelines:



- 1 Rocker
- 2 Frame
- 3 Frame seal
- 4 Rocker seal
- 5 Device insert
- 6 Device insert seal



Mounting sequence:

Press the device insert seal (6) onto the device insert (5)

Install the device insert (5) in the flush-type box

Click the rocker (1) onto the frame (2)

Put the frame seal (3) onto the rear of the frame (2) and press it down by its left and right side until the frame seal clicks into place audibly
 ----> see (7)

Slide the rocker seal (4) onto the rocker (1)

Place the cover assembly (7) onto the device insert (5)

Cover assembly (7):

